



**For Active Adults 55 & Over
1 & 2 Bedroom Apartments**

1624 S. Roddis Avenue | Marshfield, WI 54449
PH: 715-486-0066 Email: wildwood@doneff.com

AMENITIES:

- Elevator
- Community room with activities
- On-site beauty salon
- Library with internet access
- Community patio with grill
- Underground parking & storage lockers available
- Professional management and maintenance

FEATURES:

- Water, sewer & trash included
- Secure entry with intercom
- In-unit washer/ dryer
- Quality kitchen appliances
- Air conditioned
- Bath/shower with grab bars
- Convenient lever door handles

RENT RATE RANGES:

DESCRIPTION	SQ. FOOTAGE	RENTAL RATE
1 Bedroom 1 Bath	631 - 938	\$897 - \$1,159
2 Bedroom 1 Bath	905 - 1,189	\$1,114 - \$1,535
2 Bedroom 2 Bath	1,014 - 1,250	\$1,319 - \$1,597

rent rates subject to change

UNDERGROUND PARKING: \$60/month



DONEFF COMPANIES

LLC

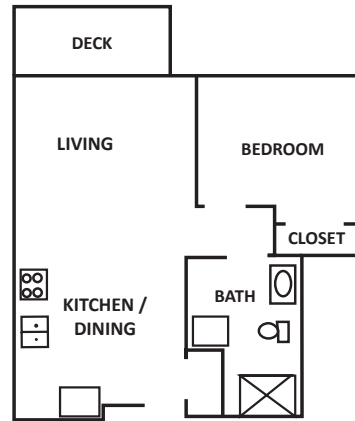
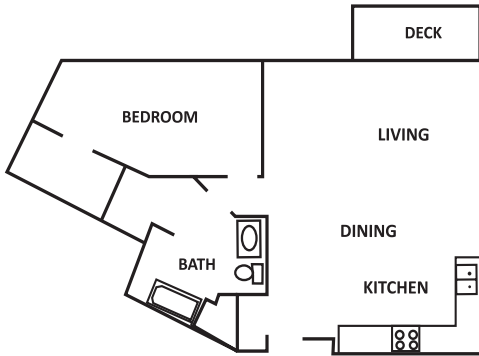
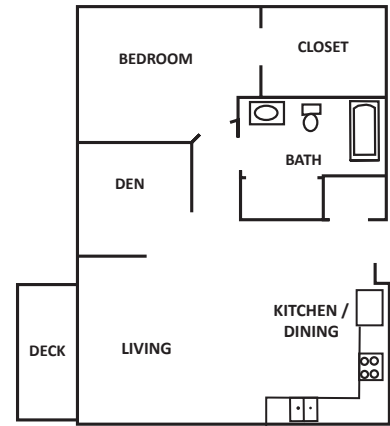
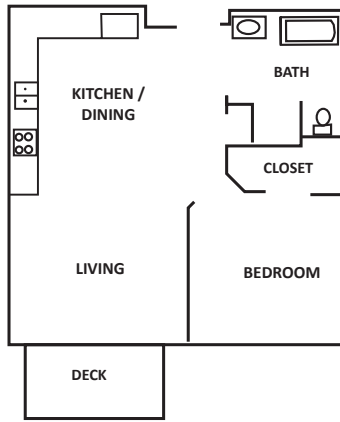
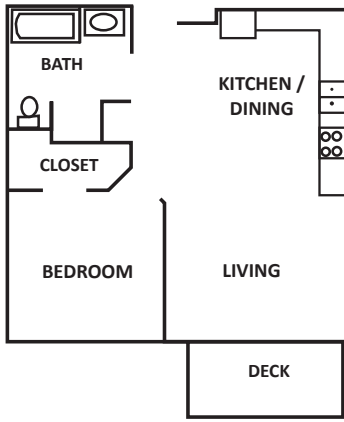
PROPERTY MANAGEMENT & DEVELOPMENT

5160 Expo Drive, Suite 100 • Manitowoc, WI 54220 • Phone: 920.682.0066 • Fax: 920.682.4632

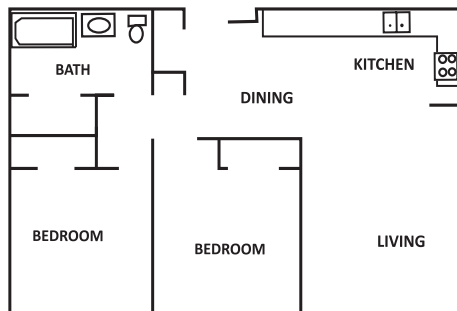
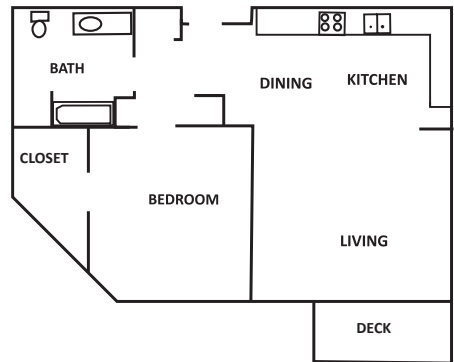
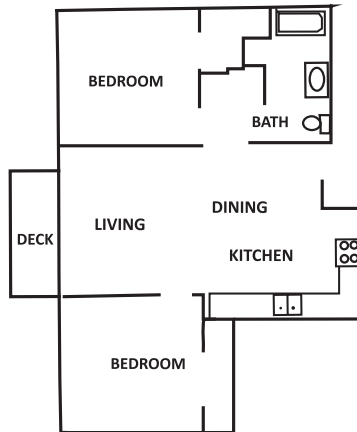
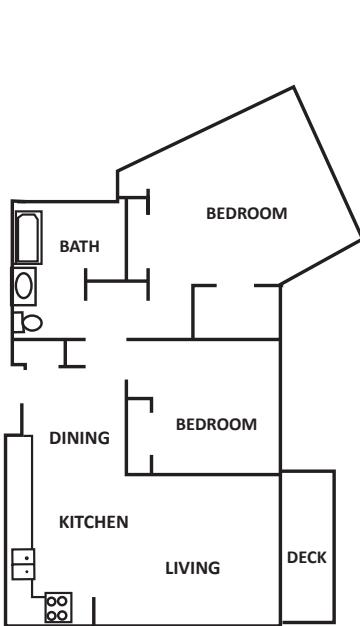
WWW.DONEFF.COM



1 BR / 1 BA FLOOR PLANS



2 BR / 1 BA FLOOR PLANS



2 BR / 2 BA FLOOR PLANS

