



# Southbrook Manor

For Active Adults 55 and Over

**1 & 2 Bedroom Apartments**

3400 Yorkshire Lane | Manitowoc, WI 54220  
**920-901-7368** | [apartments@doneff.com](mailto:apartments@doneff.com)

## AMENITIES:

- Smoke free property
- Elevator
- Heat, water, sewer, trash & recycling included
- Library on second floor
- Coin op laundry on each floor
- On-site beauty salon
- Underground parking as available for additional fee
- Complimentary surface parking lot
- Extra storage available for additional fee
- Community room with planned social activities
- Close to restaurants, shopping & banking
- Cat friendly
- Professional management and maintenance

## FEATURES:

- Secure entry with intercom
- Quality kitchen appliances
- Dishwasher and disposal
- Microwave
- Individual patio or balcony
- Air conditioner in apartment
- Some units have grab bars in bath/shower
- Walk-in closets in most units
- Convenient lever door handles

## RENT RATE RANGES:

DESCRIPTION	SQ. FT.	RENTAL RATE
1 Bedroom / 1 Bath	682 - 756	
2 Bedroom / 1 Bath	932 - 1001	
2 Bedroom / 2 Bath	1073	

**UNDERGROUND PARKING:** \$70/month



## DONEFF COMPANIES

LLC

PROPERTY MANAGEMENT & DEVELOPMENT

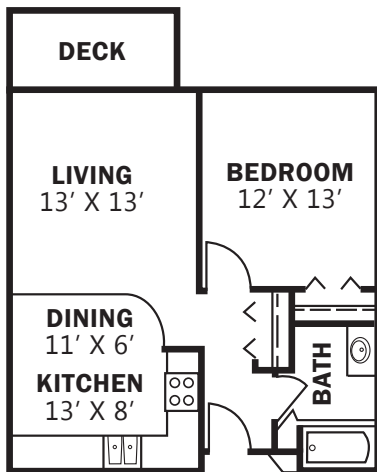
5160 Expo Drive, Suite 100 • Manitowoc, WI 54220 • Phone: 920.682.0066 • Fax: 920.682.4632

[www.doneff.com](http://www.doneff.com)



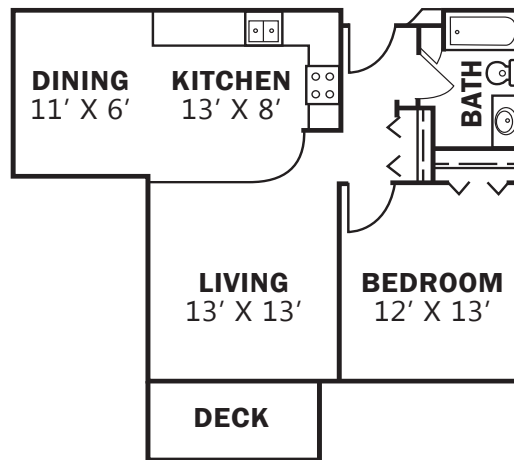
## 1 BEDROOM

**FLOOR PLAN - A**  
682 SQ. FT.



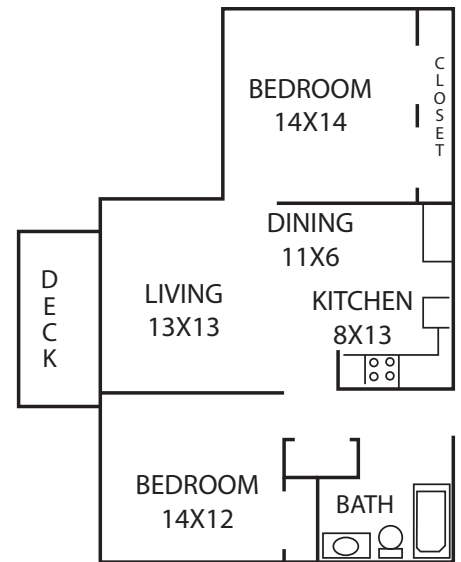
## 1 BEDROOM DELUXE

**FLOOR PLAN - E**  
756 SQ. FT.



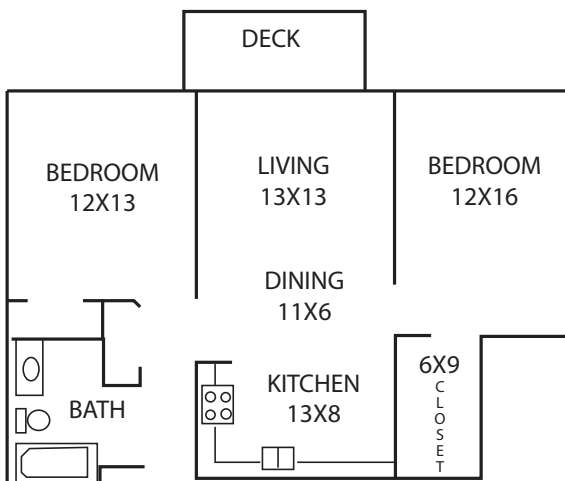
## 2 BEDROOM / 1 BATH

**FLOOR PLAN - C**  
932 SQ. FT.



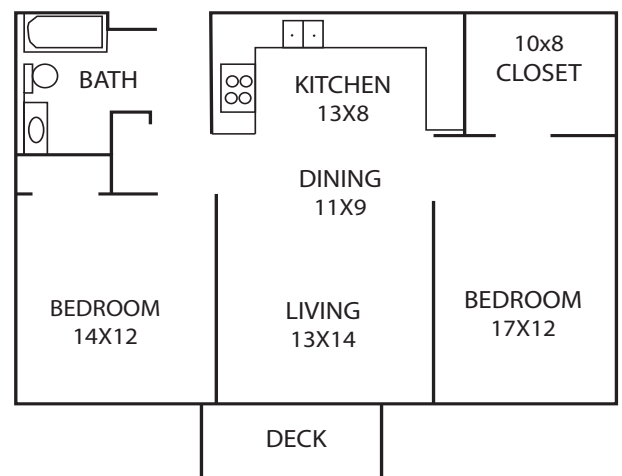
## 2 BEDROOM / 1 BATH

**FLOOR PLAN - B**  
948 SQ. FT.



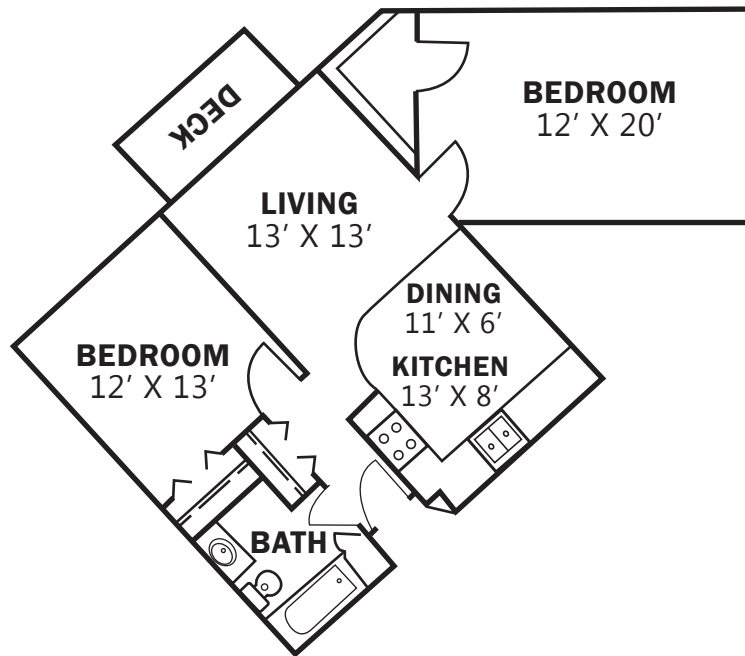
## 2 BEDROOM / 1 BATH

**FLOOR PLAN - D**  
990 SQ. FT.



## 2 BEDROOM / 1 BATH

FLOOR PLAN - F  
1001 SQ. FT.



## 2 BEDROOM / 2 BATH

FLOOR PLAN - G  
1073 SQ. FT.

