



For Active Adults 55 & Over 1 & 2 Bedroom Apartments

1624 S. Roddis Avenue | Marshfield, WI 54449

PH: 715-305-7368 Email: wildwood@doneff.com



AMENITIES:

- Smoke free property
- Elevator
- Water, sewer, trash & recycling, Wi-Fi & Spectrum included
- Library & TV room on second floor
- Community patio with grill
- In unit washer & dryer
- On-site beauty salon
- Underground parking as available for additional fee
- Complimentary surface parking lot
- Extra storage available
- Community room with planned social activities
- Close to restaurants, Downtown, Public Library, Museum & YMCA
- Cat friendly
- Professional management and maintenance

FEATURES:

- Secure entry with intercom
- Quality kitchen appliances
- Dishwasher and disposal
- Microwave
- Individual patio or balcony with beautiful views
- Air conditioner in apartment
- Some units have grab bars in bath/shower
- Walk-in closets in most units
- Convenient lever door handles

RENT RATE RANGES:

DESCRIPTION	SQ. FOOTAGE	RENTAL RATE
1 Bedroom 1 Bath	631 - 938	
2 Bedroom 1 Bath	905 - 1,189	
2 Bedroom 2 Bath	1,014 - 1,250	

Rent rates subject to change.

UNDERGROUND PARKING: \$70/month

DONEFF COMPANIES

LLC

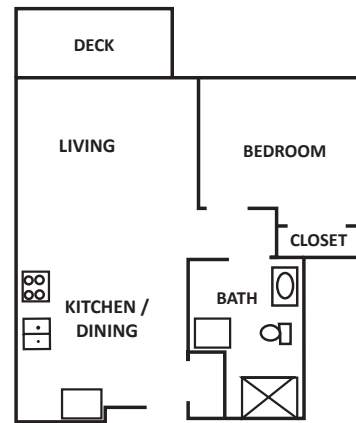
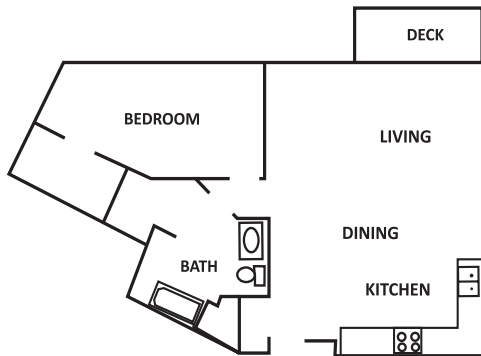
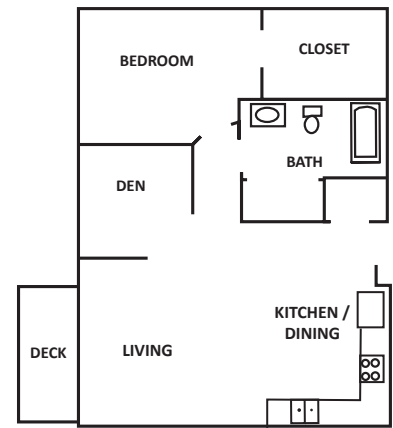
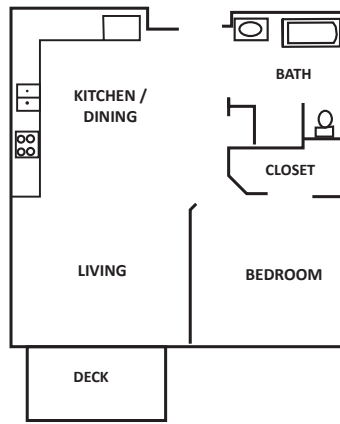
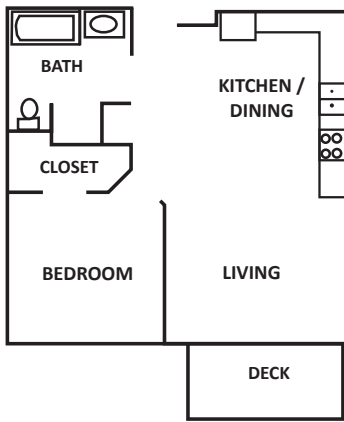
PROPERTY MANAGEMENT & DEVELOPMENT

5160 Expo Drive, Suite 100 • Manitowoc, WI 54220 • Phone: 920.682.0066 • Fax: 920.682.4632

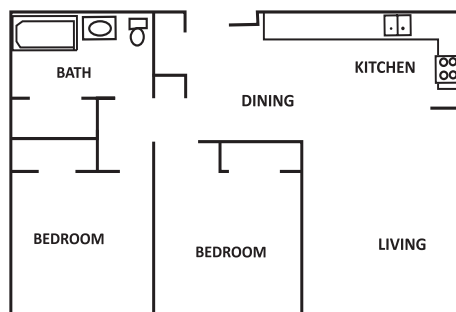
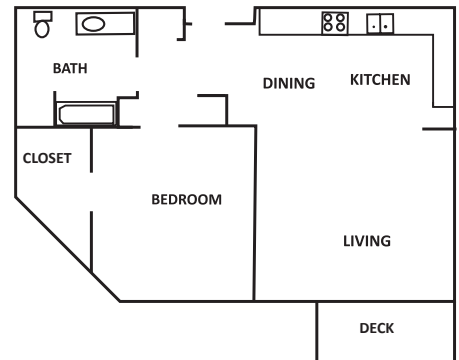
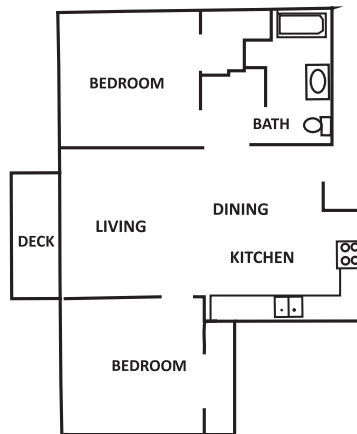
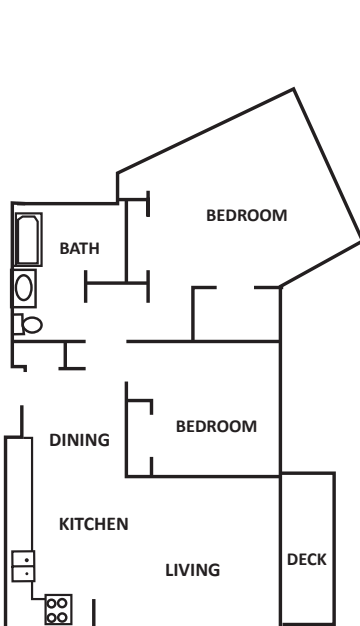
WWW.DONEFF.COM



1 BR / 1 BA FLOOR PLANS



2 BR / 1 BA FLOOR PLANS



2 BR / 2 BA FLOOR PLANS

